

## *Relief Valves*

» This is a safety device which quickly intercepts gas flow when the pressure it is monitoring reaches a pre-set limit due to any anomaly in the system



# Relief Valves

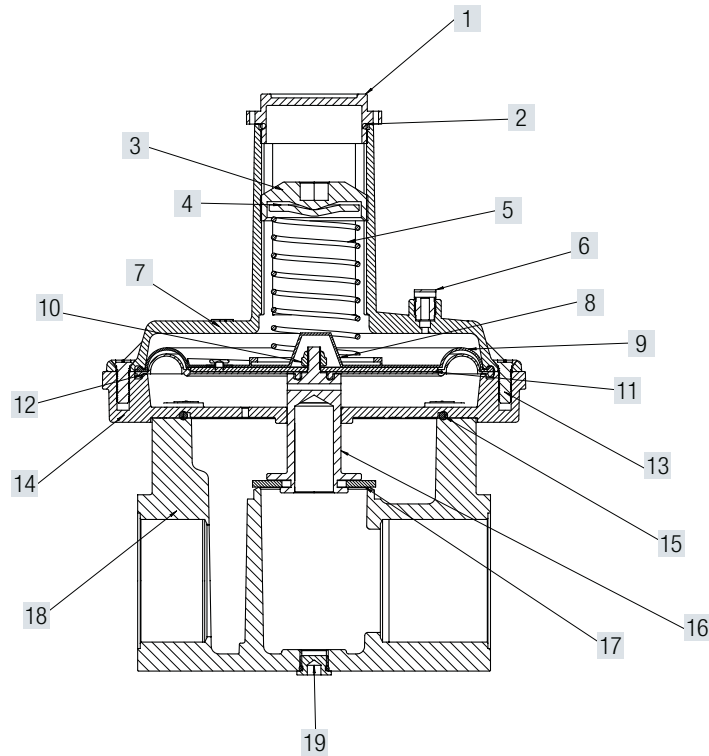
RELIEF VALVE 1/2", 3/4", 1" - Pmax 1 bar

p. 182

RELIEF VALVE 1 1/4", 1 1/2", 2" - Pmax 1 bar

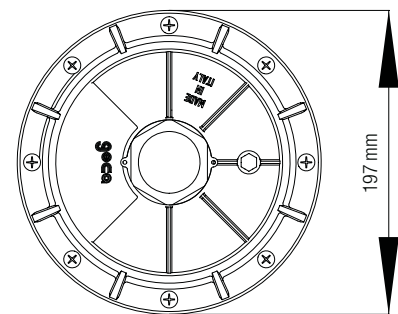
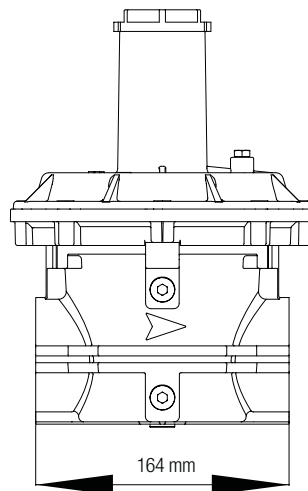
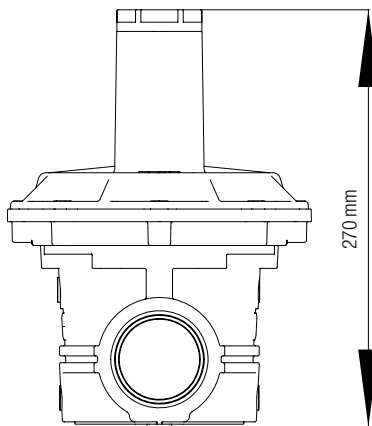
p. 184





1	Seal cap
2	O ring
3	Spring compressor
4	Washer
5	Spring
6	Vent cap
7	Upper cover
8	Plastic Washer
9	Safety diaphragm
10	Nut

11	Disc
12	Working diaphragm
13	Screws
14	Flange adaptor
15	O ring
16	Shaft
17	Gasket
18	Body
19	Screw plugs



Dimension	1 ¼"	1 ½"	2"
WEIGHT (kgs)	3,4	3,4	3,4

## RELIEF VALVE 1/2", 3/4", 1" - Pmax 1 Bar



Code	Description	Dimension	Pmax
<b>RV015-1B</b>	Relief valve	1/2"	1 bar
<b>RV020-1B</b>	Relief valve	3/4"	1 bar
<b>RV025-1B</b>	Relief valve	1"	1 bar
<b>RVD25-1B</b>	Relief valve	DN25	1 bar

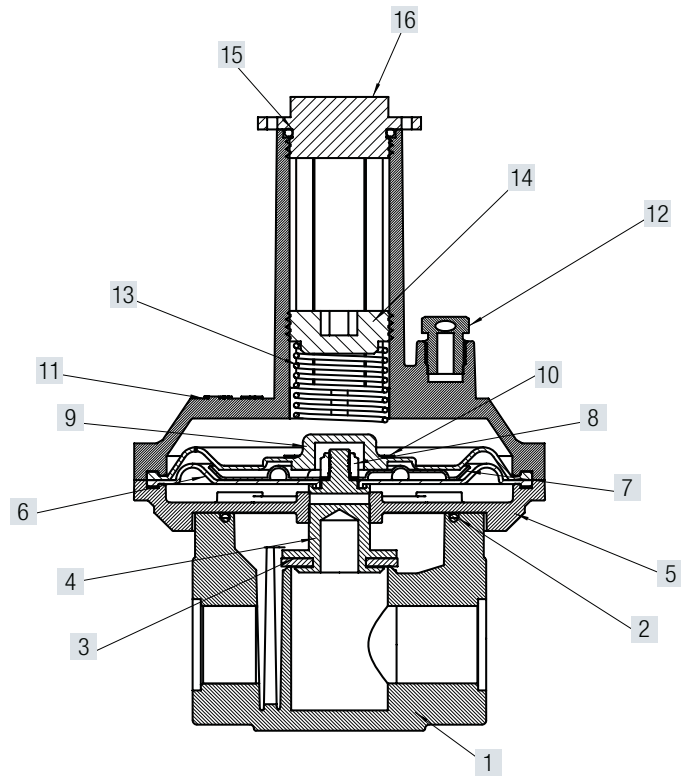
### TECHNICAL FEATURES

<b>Pmax</b>	1 bar
<b>Inlet - Outlet Connection</b>	thread 1/2", 3/4", 1" ISO228/1 DN25 - Sliding Aluminium flange PN10
<b>Setting range</b>	20 - 600 mbar - Standard spring supplied 200 - 600 mbar
Screw Plugs 1/8"	
<b>Working Temperature</b>	- 20 °C - + 60°C
<b>Use</b>	Not aggressive gases of three families – Natural gas – LPG – Town gas – Air
<b>Approval</b>	PED / EAC

### Materials:

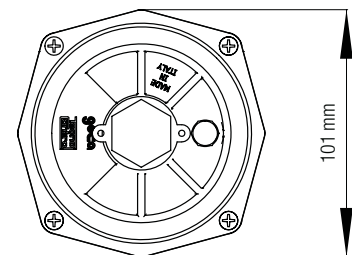
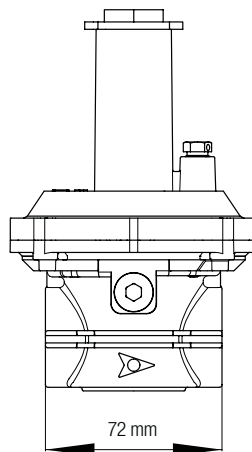
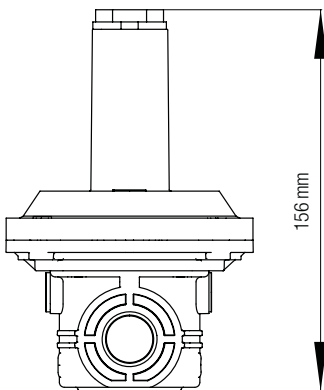
<b>Complete Body</b>	Die - Cast Aluminium Gd - AISi12Cu - EN AB 46100
<b>Diaphragms</b>	NBR 60Sh - DvGW EN 549

Code:	Color	Range mbar
<b>SPBK1-1RV</b>	Black	20 - 120 mbar
<b>SPG1-1RV</b>	Green	100 - 450 mbar
<b>SPBR1 - 1RV</b>	Brown	200 - 600 mbar



1	Body
2	O ring
3	Gasket
4	Shaft
5	Flange adapter
6	Working Diaphragm
7	Disc
8	Nut

9	Safety diaphragm
10	Washer
11	Upper cover
12	Safety vent
13	Spring
14	Spring compressor
15	O ring
16	Seal cap



Dimension	1/2"	3/4"	1"
WEIGHT (kgs)	0,8	0,7	0,5

## RELIEF VALVE 1 ¼", 1 ½", 2" - Pmax 1 Bar



Code	Description	Dimension	Pmax
<b>RV032-1B</b>	Relief valve	1 ¼"	1 bar
<b>RV040-1B</b>	Relief valve	1 ½"	1 bar
<b>RV050-1B</b>	Relief valve	2"	1 bar
<b>RVD32-1B</b>	Relief valve	DN32	1 bar
<b>RV040-1B</b>	Relief valve	DN40	1 bar
<b>RV050-1B</b>	Relief valve	DN50	1 bar

### TECHNICAL FEATURES

**Pmax** 1 bar

**Inlet - Outlet Connection** thread 1 ¼", 1 ½", 2" ISO228/1  
DN32 /DN40/DN50- Sliding Aluminium flange PN10

**Setting range** 20 - 600 mbar - Standard spring supplied 200 - 600 mbar

Screw Plugs 1/8"

**Working Temperature** - 20 °C - + 60°C

**Use** Not aggressive gases of three families – Natural gas – LPG – Town gas – Air

**Approval** PED / EAC

### Materials:

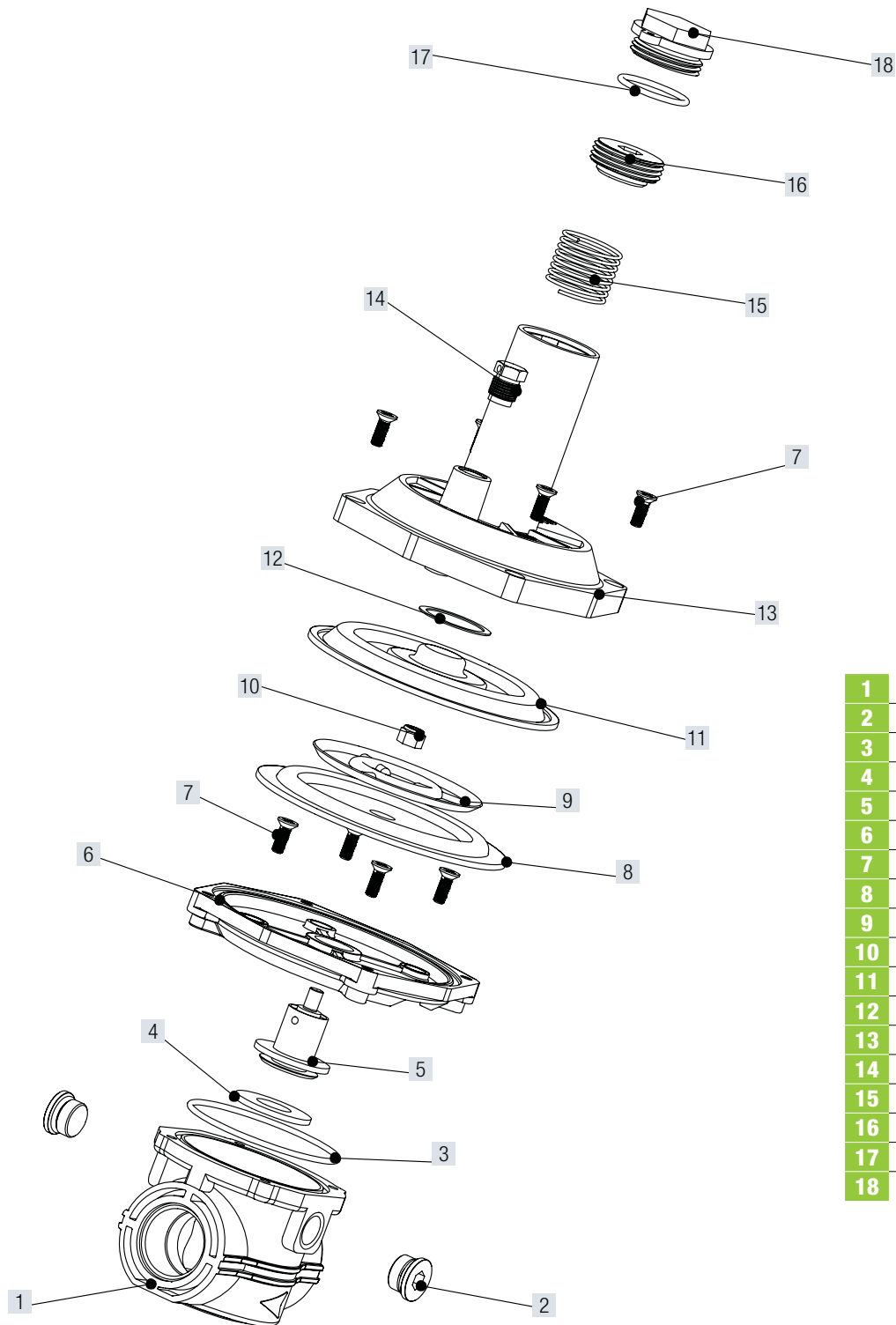
**Complete Body** Die - Cast Aluminium Gd - AISi12Cu - EN AB 46100

**Diaphragms** NBR 60Sh - DvGW EN 549

**Code:** **Color** **Range mbar**

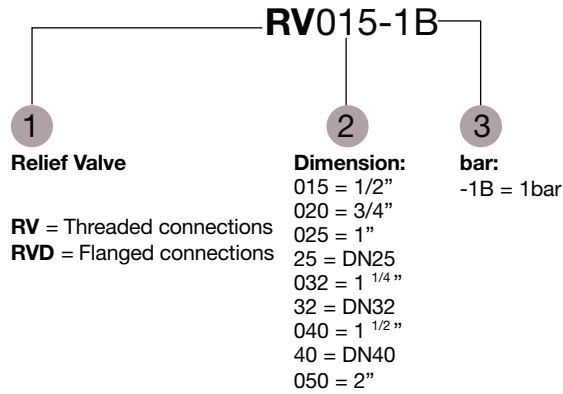
**SPBK1-1RV** Black 20 - 120 mbar  
**SPG1-1RV** Green 200 - 600 mbar

ASSEMBLY OVERVIEW



1	Body
2	Screw plugs
3	O ring
4	Gasket
5	Shaft
6	Flange adapter
7	Screw
8	Compensation Diaphragm
9	Disc
10	Nut
11	Safety diaphragm
12	Washer
13	Upper cover
14	Safety vent
15	Spring
16	Spring compressor
17	O ring
18	Seal cap

## CODE DESCRIPTION



## PACKING DIMENSION

Code	Packaging Dimension (LxWxH) cm	Weight (Kg)	Packaging
RV015-1B – RV0201B – RV025-1B	12x12x16	0,7	1 units
RV032-1B – RV040-1B – RV050-1B	23,5x28,5x24	3,8	1 units
RVD32-1B – RVD40-1B – RVD50-1B	27x28x32	6,0	1 units