

## *Gas Regulator with Slam Shut valve integrated for Over and under pressure*

» The gas pressure regulators are spring-loaded gas regulators with balanced plug, diaphragm command and contrast action by spring, suitable for low and medium pressure. Regulator and shut-off device are supplied with internal sensing lines. Both regulator and shut-off device are preset for connection to an external sensor line by the customer. They are widely used either in civil or industrial plants, using natural gas or LPG or non-corrosive gas. This regulator is equipped with an integrated slam shut valve that closes in case pressure goes over or/and under the set point limit.

# Gas Regulator

Gas Regulator with Slam Shut valve integrated for Over and Under pressure - 1 ¼", 1 ½", 2" - Pmax 500 mbar

---

p. 88



## Gas Regulator with Slam Shut valve integrated for Over and Under pressure - 1 1/4", 1 1/2", 2" - Pmax 500 mbar



Code	Description	Dimension	Pmax
RG032-SSV	Gas Regulator	1 1/4"	500 mbar
RG040-SSV	Gas Regulator	1 1/2"	500 mbar
RG050-SSV	Gas Regulator	2"	500 mbar

Code	Description	Dimension	Pmax
RGD32-SSV	Gas Regulator	DN32	500 mbar
RGD40-SSV	Gas Regulator	DN40	500 mbar
RGD50-SSV	Gas Regulator	DN50	500 mbar

### UPS0 Spring

Code:	Color	Range mbar
SPY2-U.	Yellow	5 - 14 mbar
SPN2-U.	Neutral	30 - 60 mbar

### OPS0 Spring

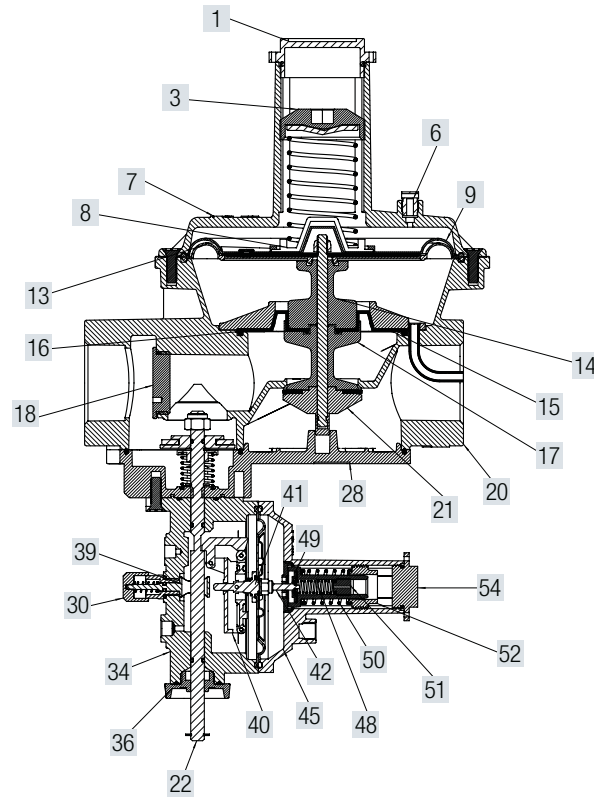
Code:	Color	Range mbar
SPB2-O.	Black	150 - 250 mbar
SPG2-O.	Green	300 - 500 mbar
SPBR2-O.	Brown	500 - 700 mbar

Other range on request

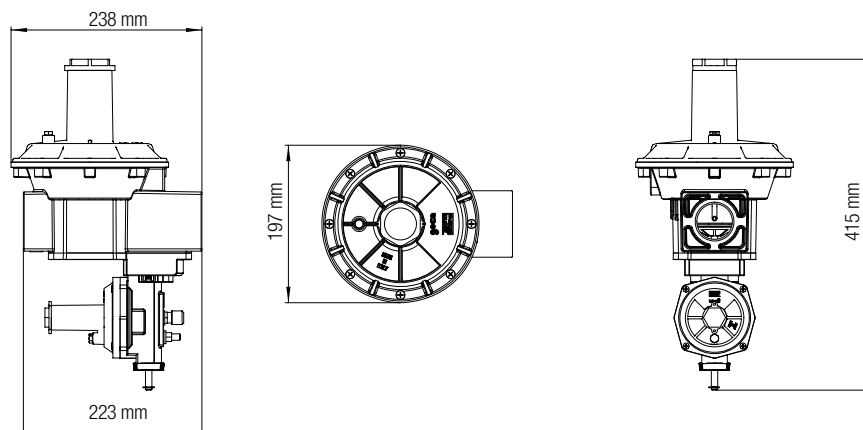
### TECHNICAL FEATURES

<b>Pmax</b>	inlet max – 500 mbar
<b>Setting outlet</b>	5 – 300 mbar – Standar spring supplied 10 – 27 mbar – Other spring on request
<b>UPS0</b>	10 - 60 mbar - Standar spring supplied 5 - 14 mbar
<b>OPS0</b>	150 - 700 mbar - Standar spring supplied 150 - 250 mbar Others configuration on request
<b>Inlet - Outlet Connection</b>	Thread gas 1 1/4" 1 1/2" - ISO 228 connection DN32 DN40 DN50 - Sliding Aluminium flange PN10
<b>Test point</b>	Inlet / outlet on request – Test point 1/8" NPT
<b>Working Temperature</b>	- 20 °C – + 60 °C
<b>Use</b>	Not aggressive gases of three families – Natural Gas – LPG – Town Gas
<b>Approval</b>	UNI EN 88-1:2008 / PED
<b>Materials:</b>	
<b>Complete Body</b>	Die – Cast Aluminium Gd – AISI12Cu - EN AB 46100
<b>Diaphragms</b>	NBR 60Sh – DvGW EN 549
<b>Plastic components</b>	White POM / Pa 66 + 25% Gf

Code:	Color	Range mbar
SPW2-5	White	5 - 14 mbar
SPY2-5	Yellow	6 - 22 mbar
SPN2-5	Neutral	10 - 27 mbar
SPR2-5	Red	28 - 70 mbar
SPBK2-5	Black	60 - 130 mbar
SPB2-5	Blue	120 - 300 mbar



<b>1</b>	Seal cap	<b>15</b>	Disc	<b>29</b>	O-Ring	<b>43</b>	O-Ring
<b>2</b>	O-Ring	<b>16</b>	Working diaphragm	<b>30</b>	Release button	<b>44</b>	Insert
<b>3</b>	Spring compressor	<b>17</b>	Lower bush	<b>31</b>	Spring	<b>45</b>	Cap
<b>4</b>	Washer	<b>18</b>	Cap	<b>32</b>	Fitting	<b>46</b>	Screws
<b>5</b>	Screws	<b>19</b>	O-Ring	<b>33</b>	O-Ring	<b>47</b>	Washer
<b>6</b>	Vent cap	<b>20</b>	Body	<b>34</b>	Body	<b>48</b>	Spring UPSO Min
<b>7</b>	Upper cover	<b>21</b>	Sensing Tube	<b>35</b>	O-Ring	<b>49</b>	Insert
<b>8</b>	Plastic Washer	<b>22</b>	Shaft	<b>36</b>	Reset knob	<b>50</b>	Spring OPSO Max
<b>9</b>	Safety diaphragm	<b>23</b>	Seal washer	<b>37</b>	Seeger	<b>51</b>	Spring compressor UPSO
<b>10</b>	Calibrated nozzle	<b>24</b>	Shaft-Insert Assembly	<b>38</b>	O-Ring	<b>52</b>	Spring compressor
<b>11</b>	Washer	<b>25</b>	Spring	<b>39</b>	Release shaft	<b>53</b>	O-Ring
<b>12</b>	Disc	<b>26</b>	Nut	<b>40</b>	Levers assembly	<b>54</b>	Seal Cap
<b>13</b>	Compensation diaphragm	<b>27</b>	Gasket	<b>41</b>	Spring		
<b>14</b>	Upper Bush	<b>28</b>	Cover	<b>42</b>	Shaft-membrane Assembly		



Dimension	1 ¼"	1 ½"	2"
WEIGHT (kgs)	4,57	4,52	4,4

*Gas Regulator with Slam Shut valve integrated for  
Over and under pressure - 5 bar*

# Gas Regulator

Gas Regulator with Slam Shut valve integrated for Over and Under pressure - 1 ¼" , 1 ½" , 2" - Pmax 5 bar p. 92

---



## Gas Regulator with Slam Shut valve integrated for Over and Under pressure - 1 1/4" , 1 1/2" , 2" - Pmax 5 bar



Code	Description	Dimension Pmax
<b>RG032-5B-SSV</b>	Gas Regulator with SSV	1 1/4" 5 bar
<b>RG040-5B-SSV</b>	Gas Regulator with SSV	1 1/2" 5 bar
<b>RG050-5B-SSV</b>	Gas Regulator with SSV	2" 5 bar

Code	Description	Dimension Pmax
<b>RGD32-5B-SSV</b>	Gas Regulator with SSV	DN32 5 bar
<b>RGD40-5B-SSV</b>	Gas Regulator with SSV	DN40 5 bar
<b>RGD50-5B-SSV</b>	Gas Regulator with SSV	DN50 5 bar

### UPS0 Spring

Code:	Color	Range mbar
<b>SPY2-U.</b>	Yellow	5 - 14 mbar
<b>SPN2-U.</b>	Neutral	30 - 60 mbar

### OPSO Spring

Code:	Color	Range mbar
<b>SPB2-O.</b>	Black	150 - 250 mbar
<b>SPG2-O.</b>	Green	300 - 500 mbar
<b>SPBR2-O.</b>	Brown	500 - 700 mbar

Other range on request

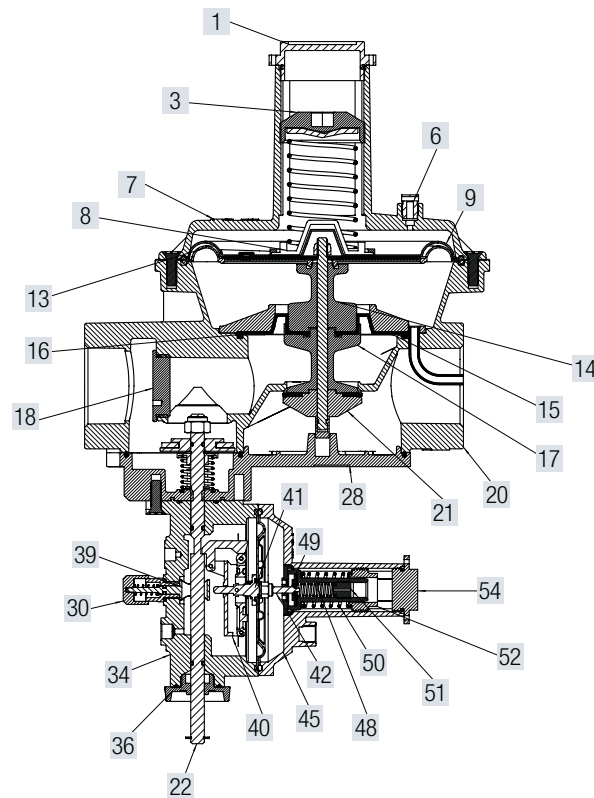
### TECHNICAL FEATURES

<b>Pmax</b>	inlet max – 5 bar
<b>Setting outlet</b>	6 – 480 mbar – Standar spring supplied 10 – 27 mbar – Other spring on request
<b>UPS0</b>	10 - 60 mbar - Standar spring supplied 5 - 14 mbar
<b>OPSO</b>	150 - 700 mbar - Standar spring supplied 150 - 250 mbar Others configuration on request
<b>Inlet - Outlet Connection</b>	Thread gas 1 1/4" 1 1/2" - ISO 228 connection DN32 DN40 DN50 - Sliding Aluminium flange PN10
<b>Test point</b>	Inlet / outlet on request – Test point 1/8" NPT
<b>Working Temperature</b>	- 20 °C – + 60 °C
<b>Use</b>	Not aggressive gases of three families – Natural Gas – LPG – Town Gas
<b>Approval</b>	UNI EN 88-2:2008 / PED

### Materials:

<b>Complete Body</b>	Die – Cast Aluminium Gd – AlSi12Cu - EN AB 46100
<b>Diaphragms</b>	NBR 60Sh – DvGW EN 549 Reinforced diaphragm
<b>Plastic components</b>	White POM / Pa 66 + 25% Gf

Code:	Color	Range mbar
<b>SPY2-12</b>	Yellow	6 - 22 mbar
<b>SPN2-12</b>	Neutral	10 - 27 mbar
<b>SPR2-12</b>	Red	28 - 70 mbar
<b>SPBK2-12</b>	Black	60 - 130 mbar
<b>SPG2-12</b>	Green	120 - 300 mbar
<b>SPBR2-12</b>	Brown	220 - 480 mbar

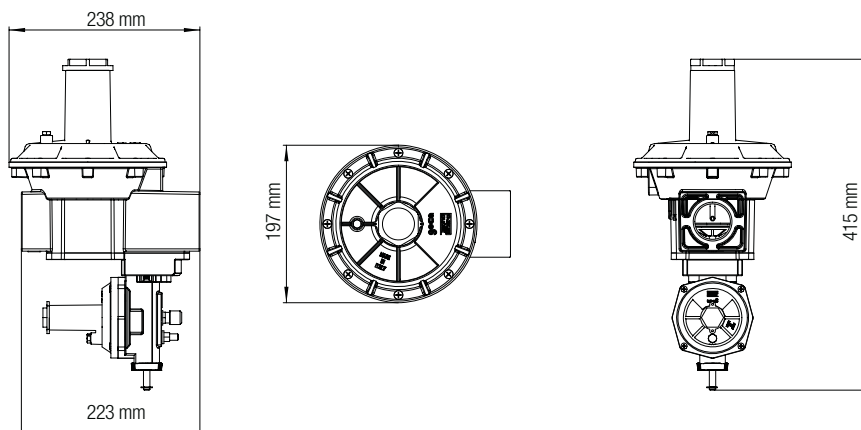


1	Seal cap
2	O-Ring
3	Spring compressor
4	Washer
5	Screws
6	Vent cap
7	Upper cover
8	Plastic Washer
9	Safety diaphragm
10	Calibrated nozzle
11	Washer
12	Disc
13	Compensation diaphragm
14	Upper Bush

15	Disc
16	Working diaphragm
17	Lower bush
18	Cap
19	O-Ring
20	Body
21	Sensing Tube
22	Shaft
23	Seal washer
24	Shaft-Insert Assembly
25	Spring
26	Nut
27	Gasket
28	Cover

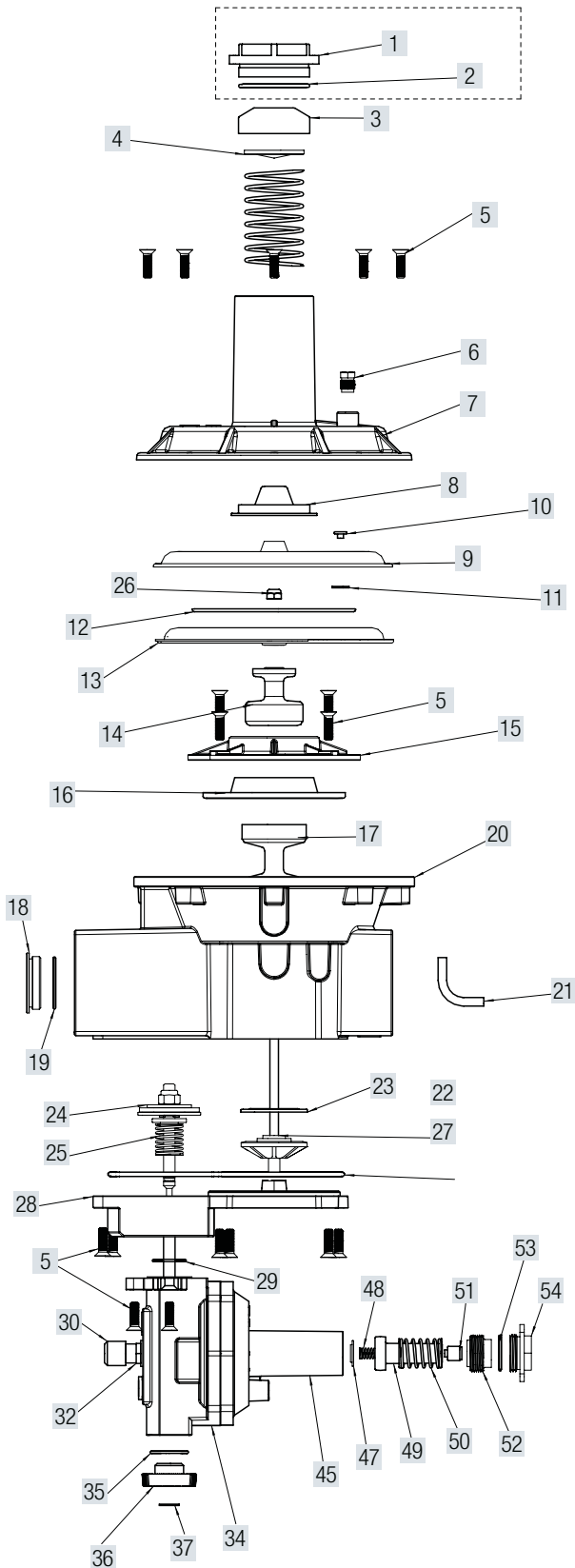
29	O-Ring
30	Release button
31	Spring
32	Fitting
33	O-Ring
34	Body
35	O-Ring
36	Reset knob
37	Seeger
38	O-Ring
39	Release shaft
40	Levers assembly
41	Spring
42	Shaft-membrane Assembly

43	O-Ring
44	Insert
45	Cap
46	Screws
47	Washer
48	Spring UPSO Min
49	Insert
50	Spring OPSO Max
51	Spring compressor UPSO
52	Spring compressor
53	O-Ring
54	Seal Cap



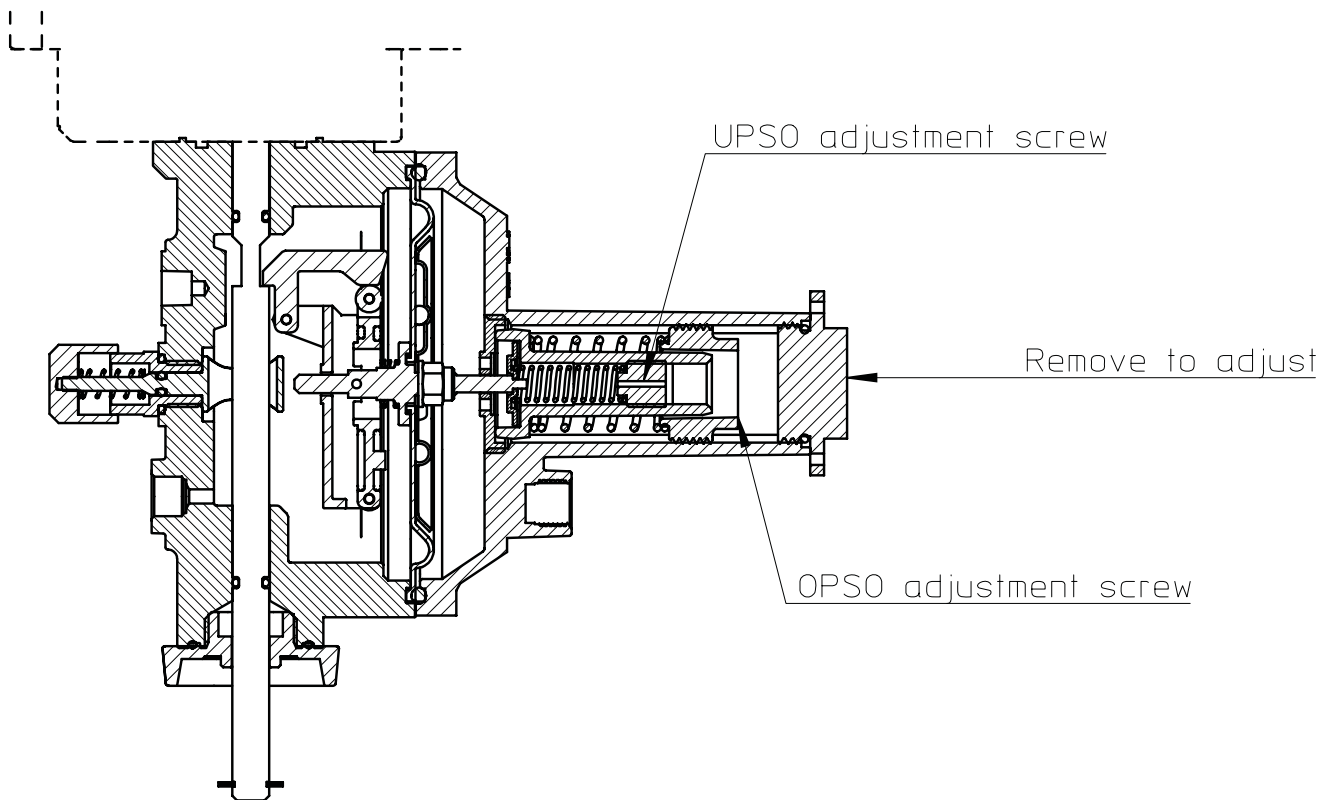
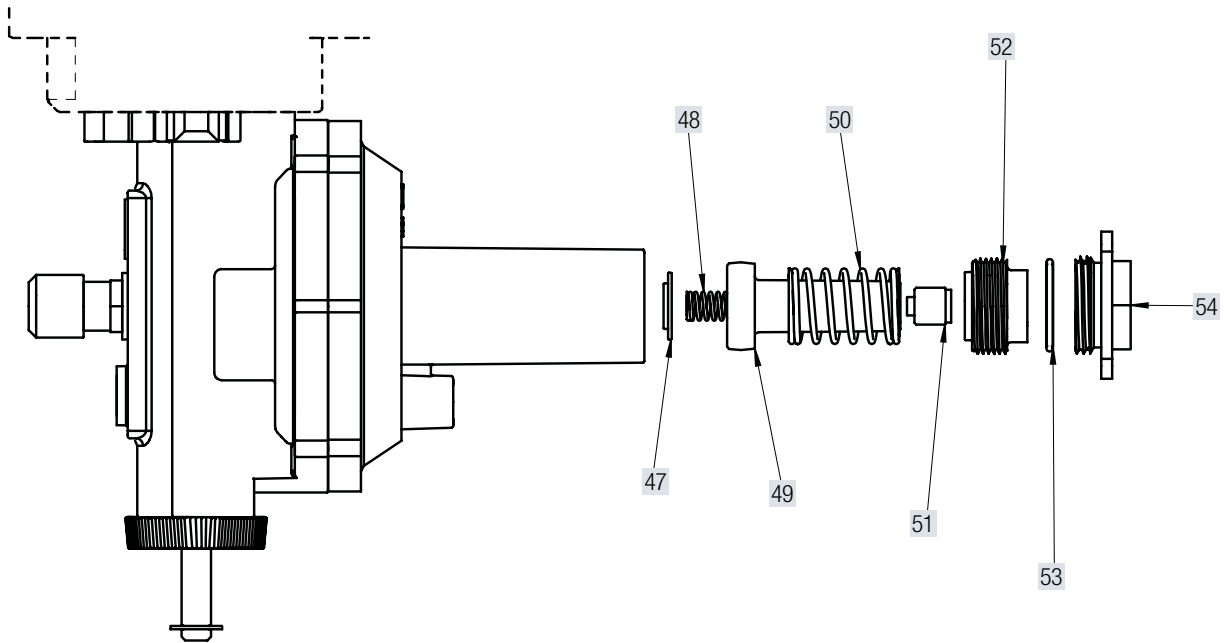
Dimension	1 ¼"	1 ½"	2"
WEIGHT (kgs)	4,57	4,52	4,4

ASSEMBLY OVERVIEW



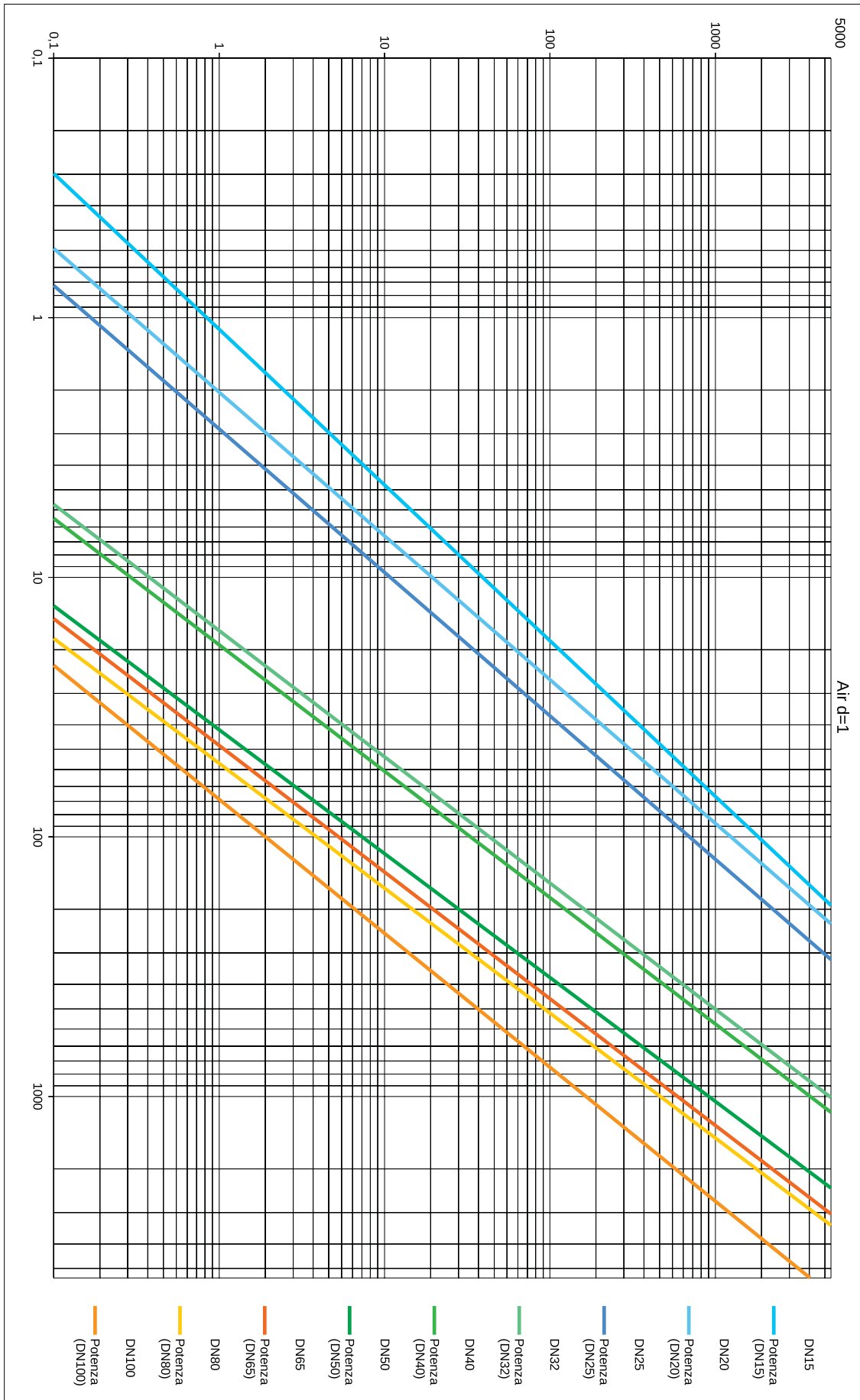
1	Seal cap
2	O-Ring
3	Spring compressor
4	Washer
5	Screws
6	Vent cap
7	Upper cover
8	Plastic Washer
9	Safety diaphragm
10	Calibrated nozzle
11	Washer
12	Disc
13	Compensation diaphragm
14	Upper Bush
15	Disc
16	Working diaphragm
17	Lower bush
18	Cap
19	O-Ring
20	Body
21	Sensing Tube
22	Shaft
23	Seal washer
24	Shaft-Insert Assembly
25	Spring
26	Nut
27	Gasket
28	Cover
29	O-Ring
30	Release button
31	Spring
32	Fitting
33	O-Ring
34	Body
35	O-Ring
36	Reset knob
37	Seeger
38	O-Ring
39	Release shaft
40	Levers assembly
41	Spring
42	Shaft-membrane Assembly
43	O-Ring
44	Insert
45	Cap
46	Screws M4
47	Washer
48	Spring UPSO Min
49	Insert
50	Spring OPSO Max
51	Spring compressor UPSO
52	Spring compressor
53	O-Ring
54	Seal Cap

## SETTINGS



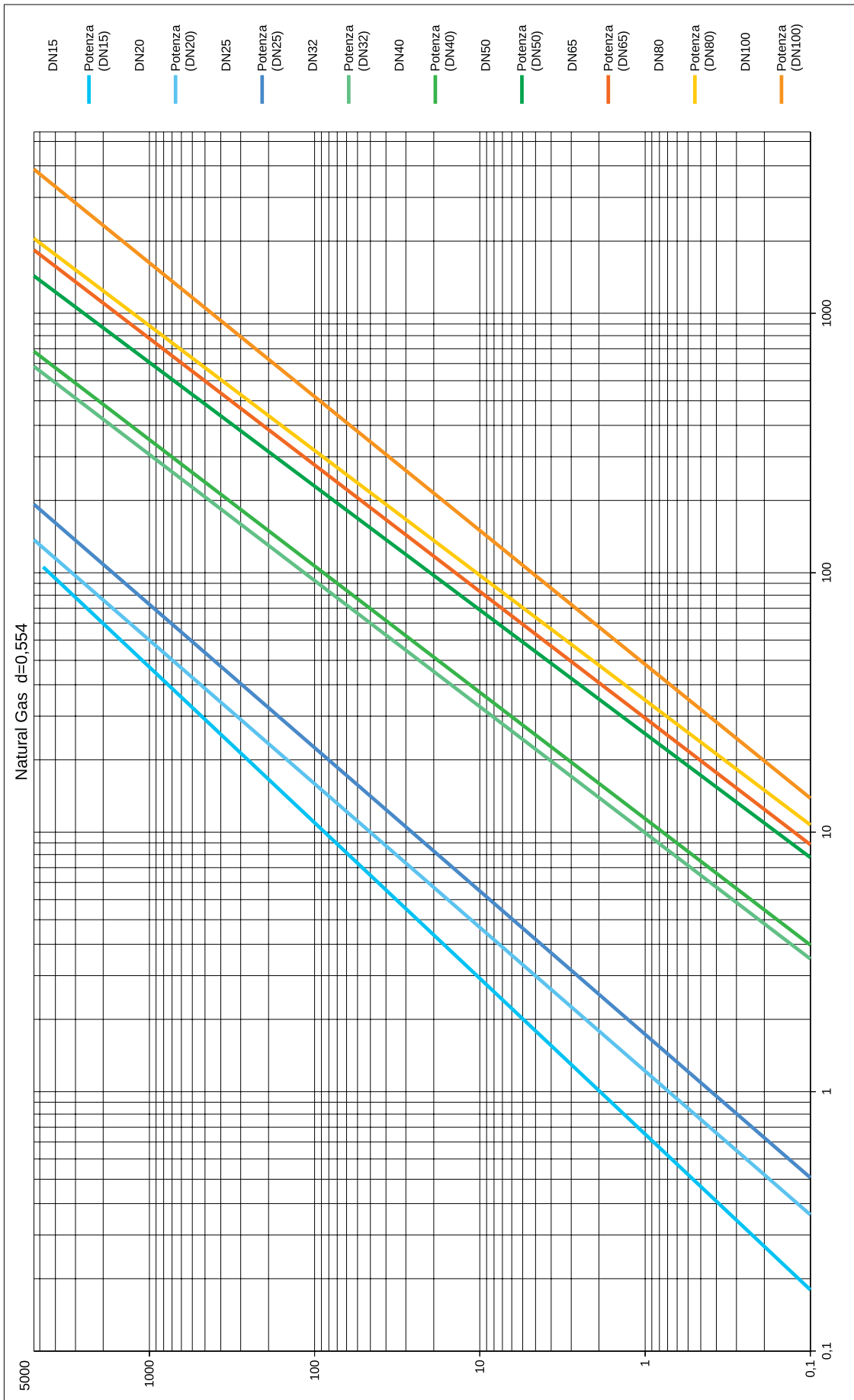
## Gas Regulator 500 mbar & 5 bar - Air d=1

Pressure drops (mbar)



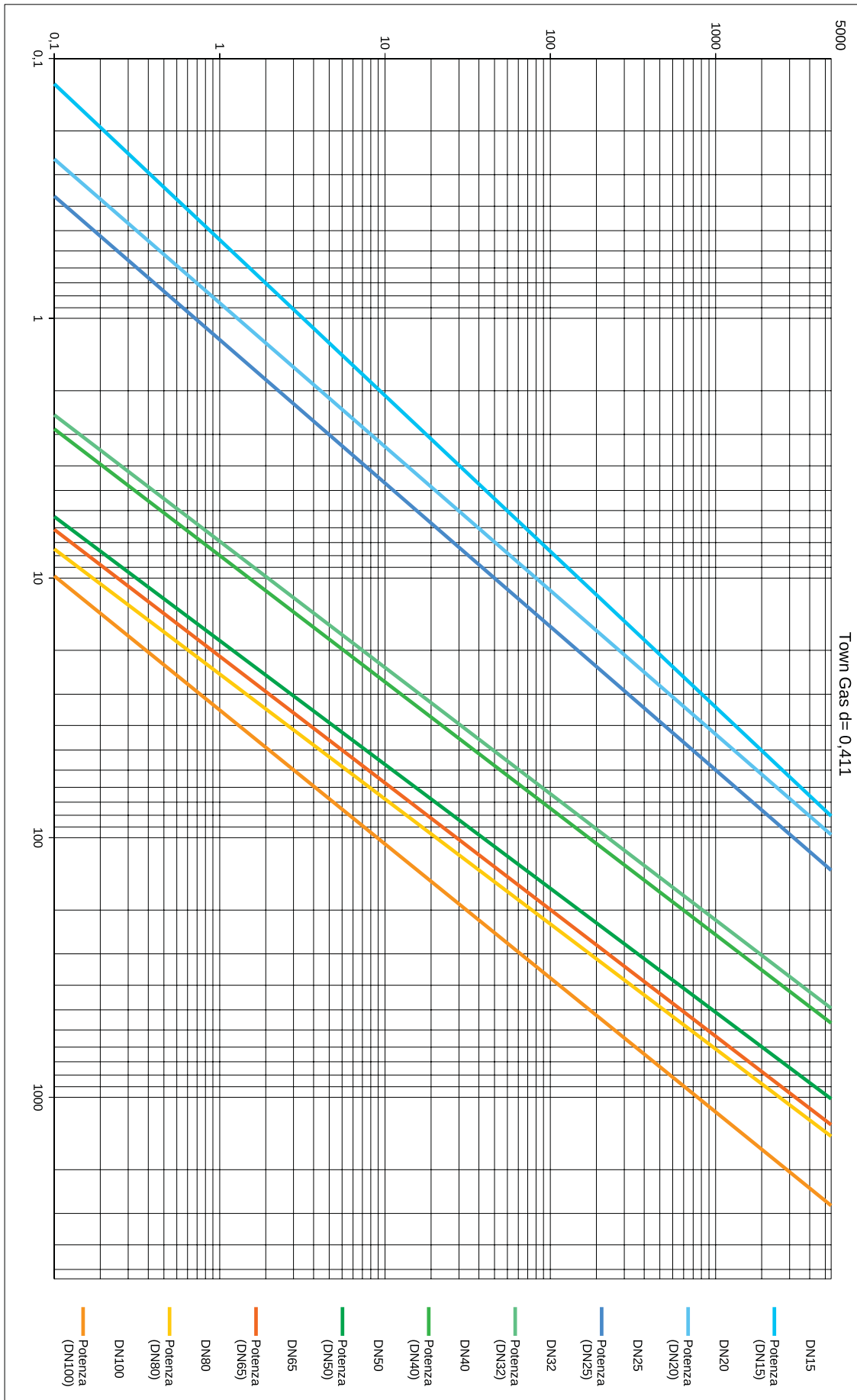
# Gas Regulator 500 mbar & 5 bar - Natural Gas $d=0,554$

Pressure drops (mbar)



## Gas Regulator 500 mbar & 5 bar - Town Gas d=0,411

Pressure drops (mbar)



# Gas Regulator 500 mbar & 5 bar - LPG d=1,58

Pressure drops (mbar)

