

Slam Shut Off Valves – OPSO – Pmax 6 bar

» Is installed after Filter & before pressure regulator.
Slam shut off valve close the supply of gas when a downstream pressure exceeds a pre-determined limit.

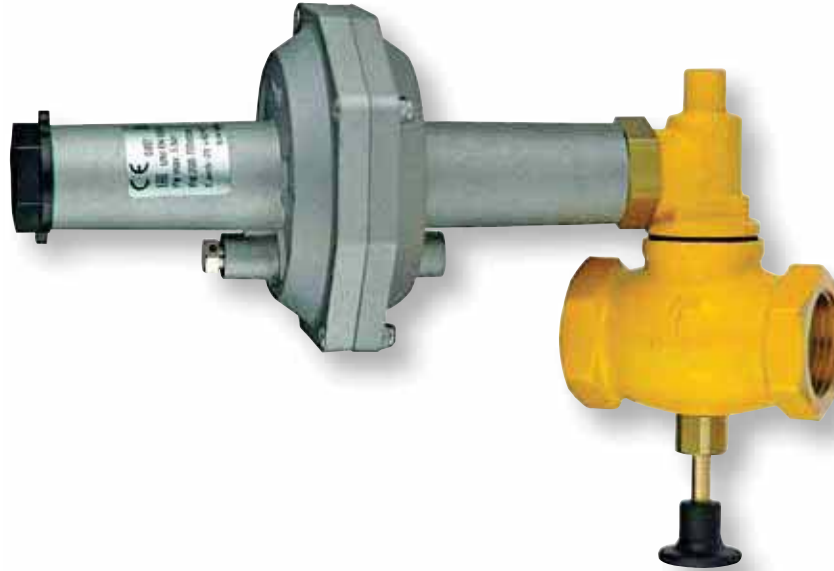
Slam Shut Off Valves - OPSO - Pmax 6 bar

SLAM SHUT OFF VALVES p. 190
1/2", 3/4" and 1" – OPSO – Pmax 6 bar

SLAM SHUT OFF VALVES p. 192
1 1/4", 1 1/2" and 2" – OPSO – Pmax 6 bar

SLAM SHUT OFF VALVES p. 194
DN65, DN80, DN100 – OPSO – Pmax 6 bar



SLAM SHUT OFF VALVES ½", ¾", 1" – OPSO – Pmax 6 bar


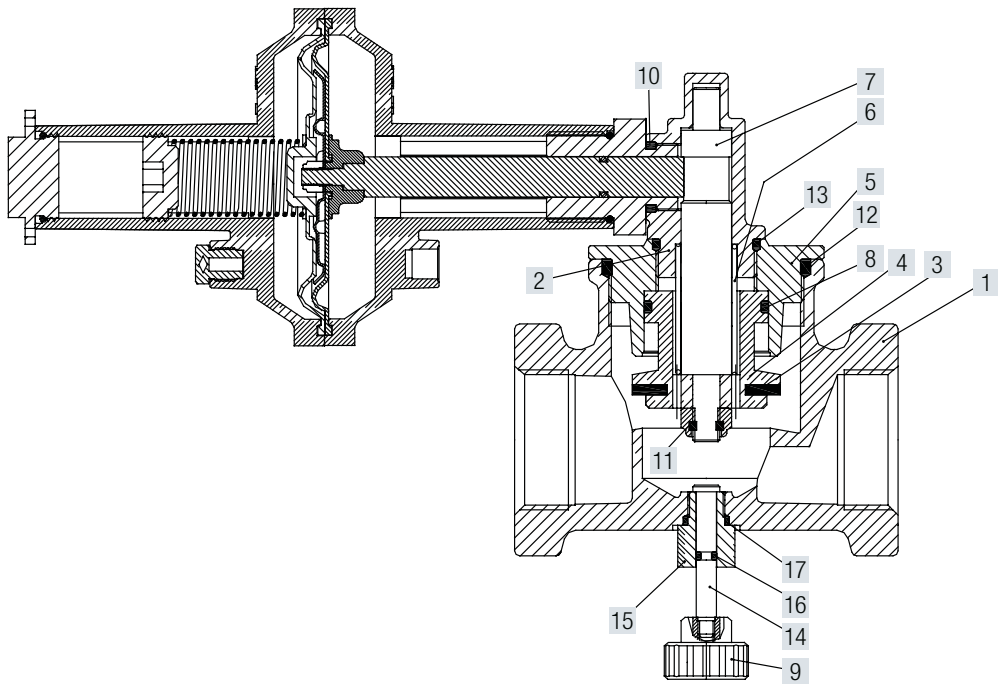
Code	Description	Dimension	Pmax
SV015- 6B - OPSO	Slam shut off valve	½"	6 bar
SV020- 6B - OPSO	Slam shut off valve	¾"	6 bar
SV025- 6B - OPSO	Slam shut off valve	1"	6 bar
SVD25- 6B - OPSO	Slam shut off valve	DN25	6 bar

TECHNICAL FEATURES

Pmax	6 bar
Inlet connection	Threaded gas ½", ¾" and 1" - ISO 228
Setting range: Closing time	60 - 700 mbar – Standard spring supplied 200 – 700 mbar <1 second
Use	Non – Aggressive gases – Family 1-2-3 and air
Working Temperature	- 15 °C / + 70 °C
Approval	PED
Protection degree	IP65

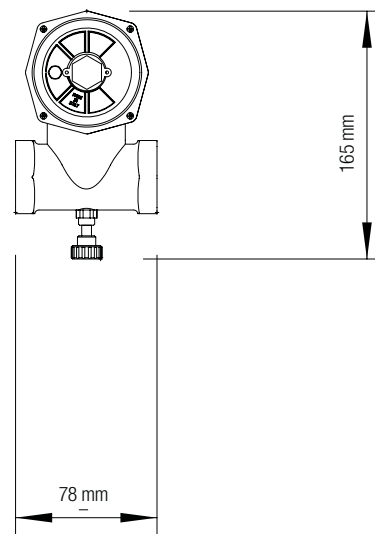
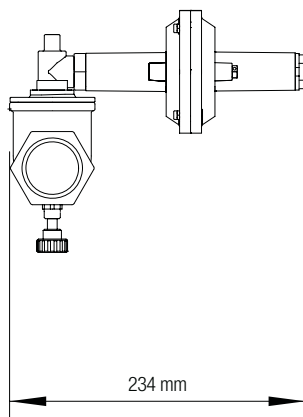
Materials:

Body	Brass ST-CW617N – EN 12420 – Yellow Painted
Seals	NBR
Internal componentes	Brass



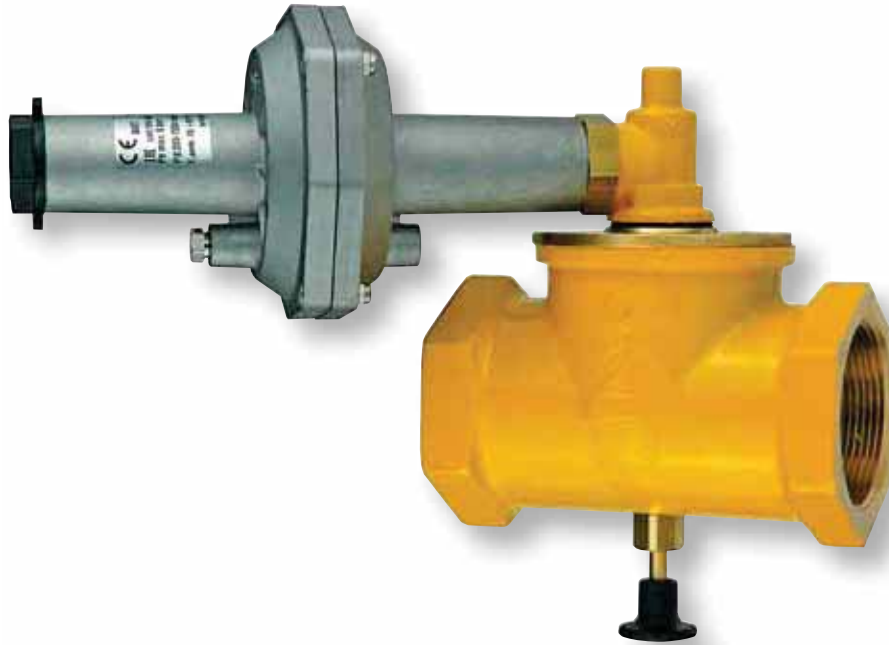
1	Body
2	Upper Body
3	Gasket
4	Insert
5	Ring nut
6	Spring
7	Piston
8	O-Ring
9	Rear handle

10	O-Ring
11	Self-locking nut
12	O-Ring
13	O-Ring
14	Piston
15	Fitting
16	O-Ring
17	O-Ring



Dimension	1/2"	3/4"	1"
WEIGHT (kgs)	1,1	1,05	1,45

SLAM SHUT OFF VALVES 1 ¼", 1 ½", 2" – OPSO – Pmax 6 bar



Code	Description	Dimension	Pmax
SV032-6B-OPSO	Slam shut off valve	1 ¼"	6 bar
SV040-6B-OPSO	Slam shut off valve	1 ½"	6 bar
SV050-6B-OPSO	Slam shut off valve	2"	6 bar

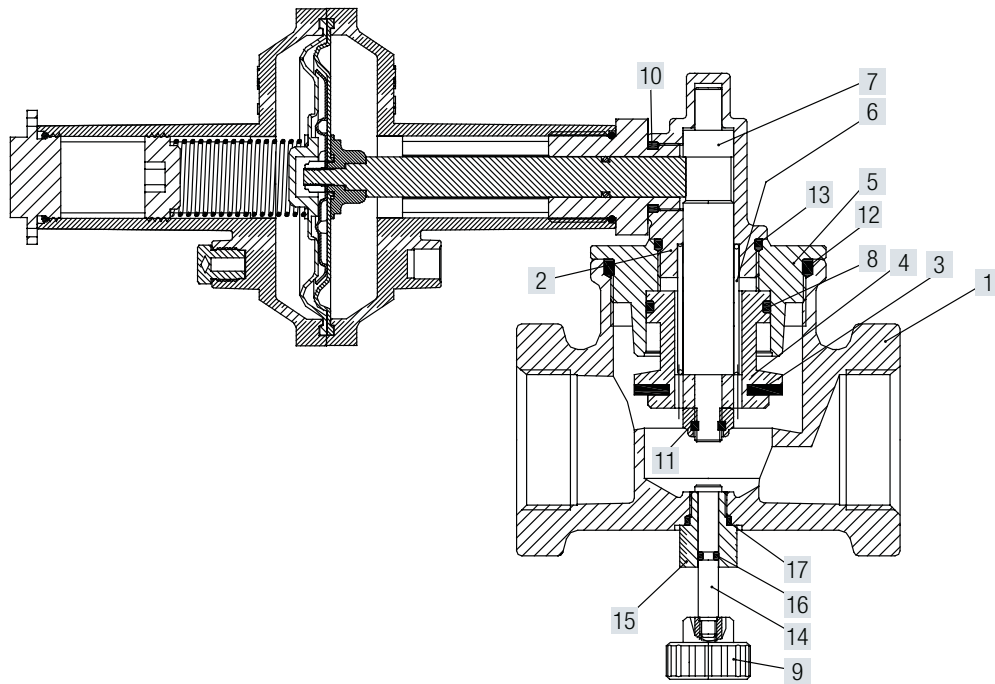
Code	Description	Dimension	Pmax
SVD32-6B-OPSO	Slam shut off valve	DN32	6 bar
SVD40-6B-OPSO	Slam shut off valve	DN40	6 bar
SVD50-6B-OPSO	Slam shut off valve	DN50	6 bar

TECHNICAL FEATURES

Pmax	6 bar
Inlet connection	Threaded gas 1 ¼", 1 ½", 2" – ISO228
Setting range: Closing time	60 - 700 mbar – Standard spring supplied 200 – 700 mbar <1 second
Use	Non – Aggressive gases – Family 1-2-3 and air
Working Temperature	- 15 °C / + 70 °C
Approval	PED
Protection degree	IP65

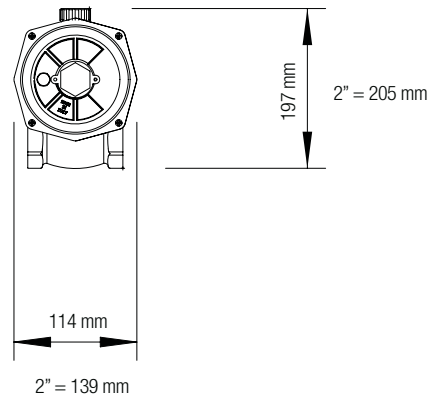
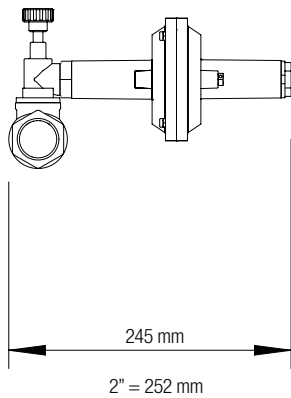
Materials:

Body	Brass ST-CW617N – EN 12420 – Yellow Painted
Seals	NBR
Internal componentes	Brass



1	Body
2	Upper Body
3	Gasket
4	Insert
5	Ring nut
6	Spring
7	Piston
8	O-Ring
9	Rearm handle

10	O-Ring
11	Self-locking nut
12	O-Ring
13	O-Ring
14	Piston
15	Fitting
16	O-Ring
17	O-Ring



Dimension	1 1/4"	1 1/2"	2"
WEIGHT (kgs)	2,85	2,65	3,80

SLAM SHUT OFF VALVES DN65, DN80, DN100 – OPSO – Pmax 6 bar

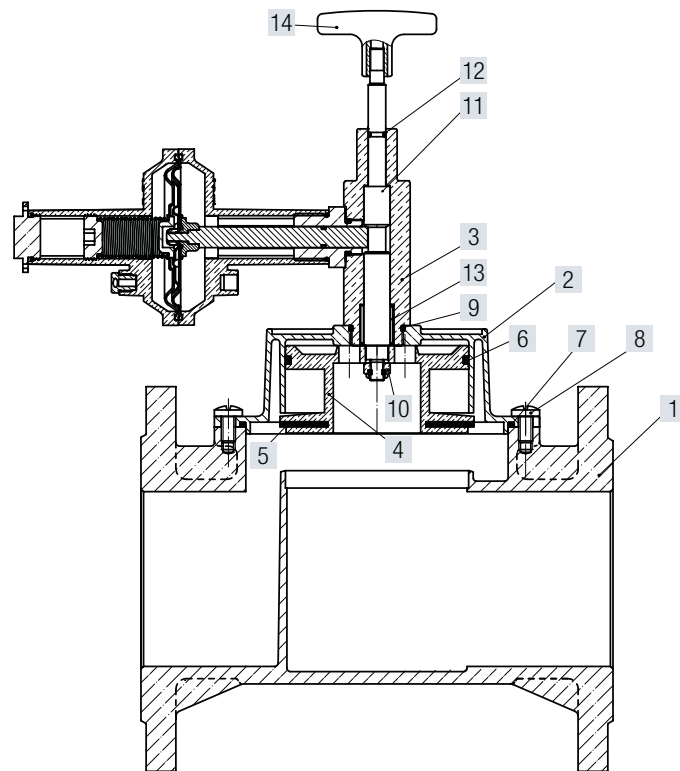

Code	Description	Dimension	Pmax
SVD65-6B-OPSO	Slam shut off valve	DN65	6 bar
SVD80-6B-OPSO	Slam shut off valve	DN80	6 bar
SVD100-6B-OPSO	Slam shut off valve	DN100	6 bar

TECHNICAL FEATURES

Pmax	6 bar
Inlet connection	Flanged DN65 , DN80 , DN100 – PN16
Setting range: Closing time	60 - 700 mbar – Standard spring supplied 200 – 700 mbar <1 second
Use	Non – Aggressive gases – Family 1-2-3 and air
Working Temperature	- 15 °C / + 70 °C
Approval	PED
Protection degree	IP65

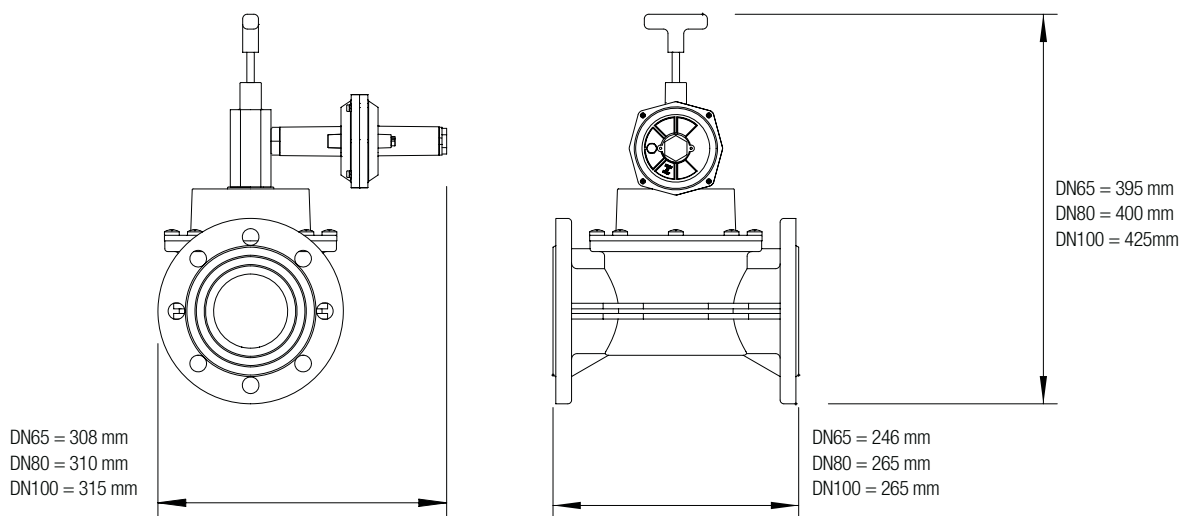
Materials:

Body	Aluminium EN AC 43100
Seals	NBR
Internal componentes	Brass



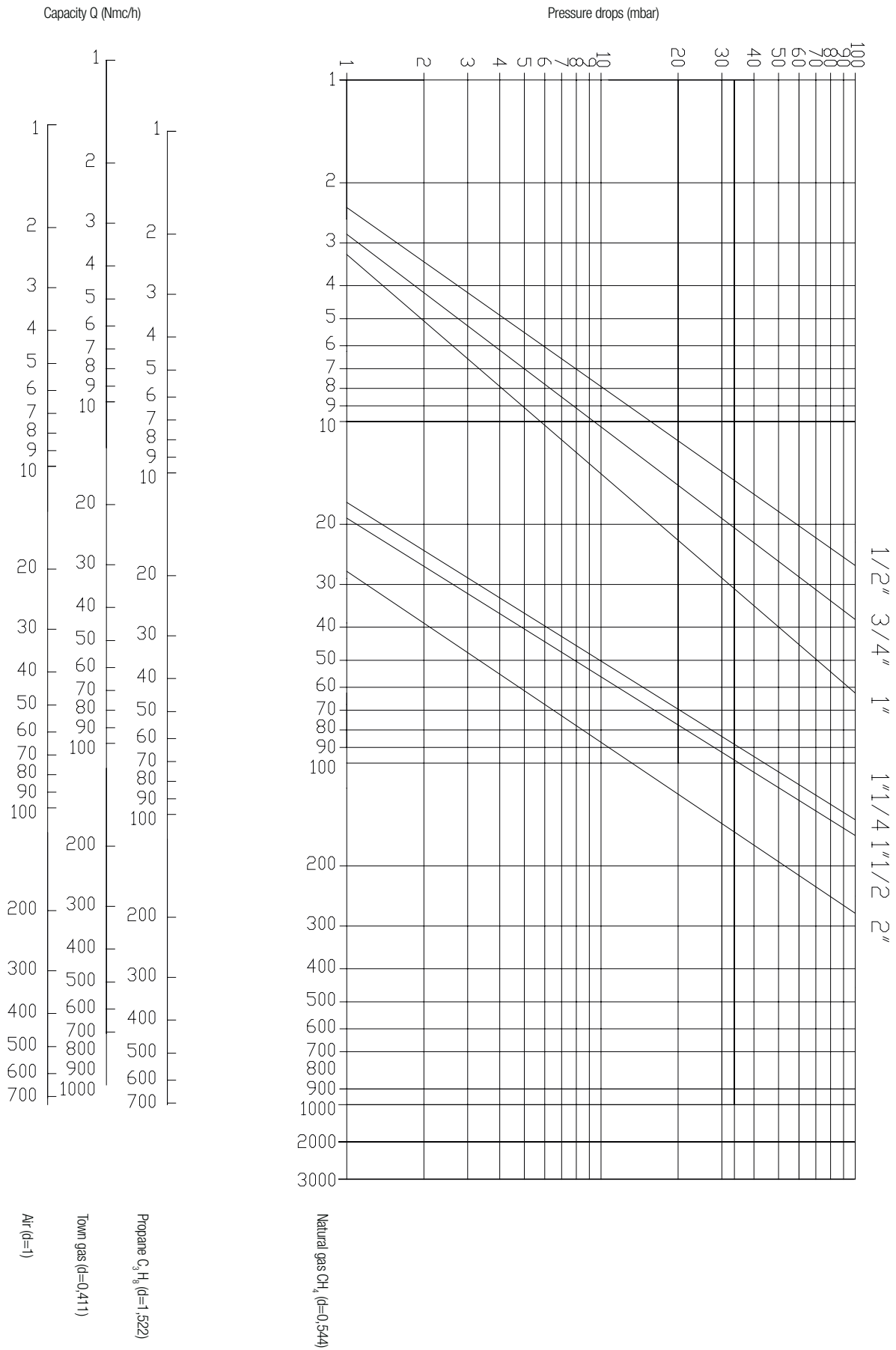
1	Body
2	Cap
3	Fitting
4	Insert
5	Gasket
6	O-Ring
7	O-Ring

8	Screws
9	O-Ring
10	Self-locking
11	Piston
12	O-Ring
13	Spring
14	Rearm handle

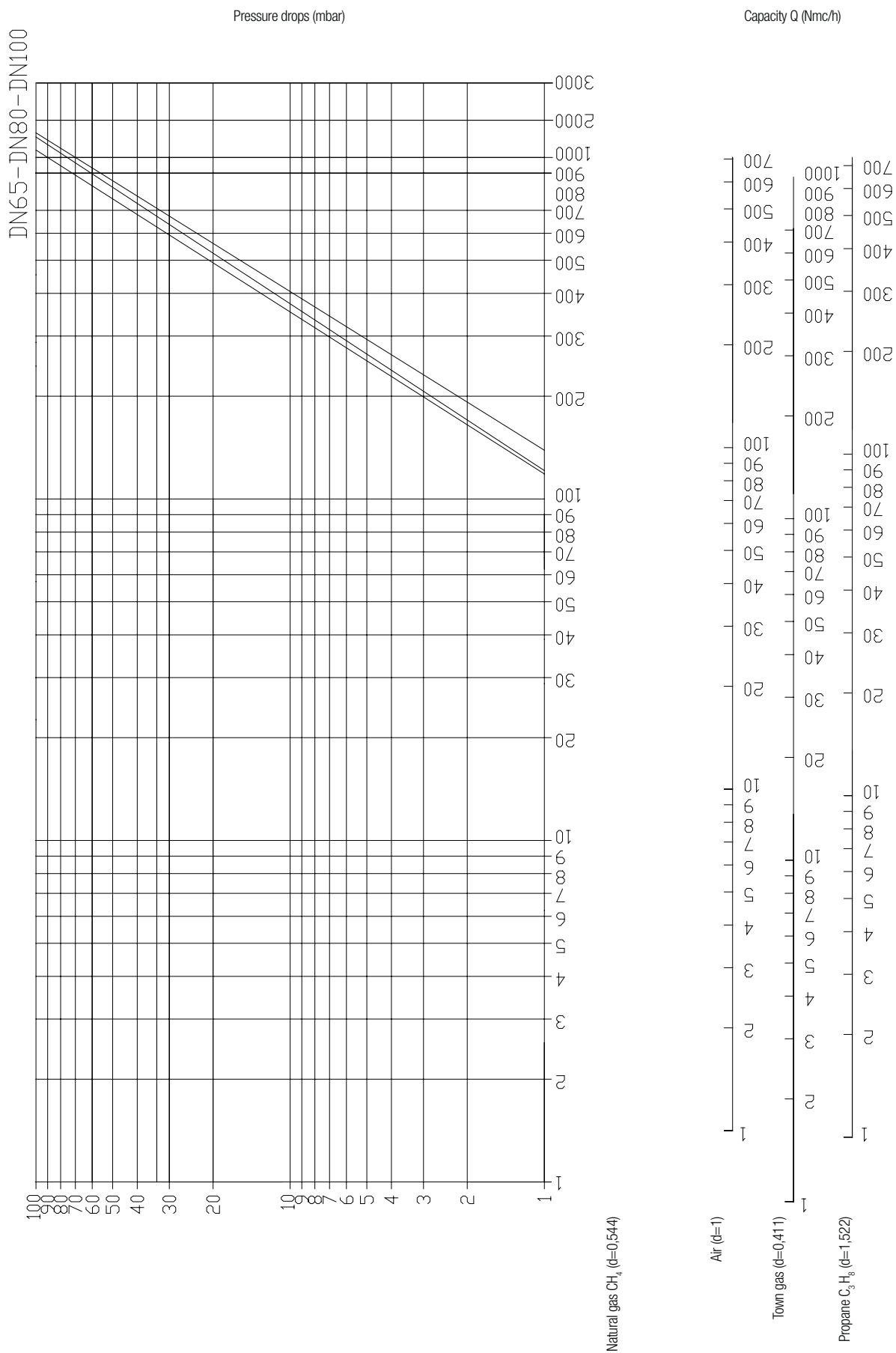


Dimension	DN65	DN80	DN100
WEIGHT (kgs)	11,23	12,65	13,12

Slam Shut off valve 1/2" to 2"



Slam Shut off valve DN65 to DN100



CODE DESCRIPTION

SV015-6B-OPSO

1
2
3
4

<p>1 SLAM SHUT OFF VALVE:</p> <p>SV = Threaded connections SVD=Flanged connections</p> <p>3 bar:</p> <p>-6B = 6bar</p>	<p>2 DIMENSIONS:</p> <p>025= 1” 25= DN25 032= 1 1/4” 32= DN32 040= 1 1/2” 40= DN40 050= 2” 50= DN50 65= DN65 80= DN80 100= DN100</p> <p>4 MAXIMUM PRESSURE</p> <p>OPSO = 200 - 700mbar</p>
--	--

INSTALLATION

This component must be installed in accordance with current laws. Before commencing installation make sure that the gas has been shut off. The slam shut off valves must be installed in a horizontal position with a maximum angle of 90° and with the arrow printed on the body facing the user. Read the instruction leaflet carefully before use. If the slam shut off valves are installed following all the indications in the following document they do not represent a source of danger. Only in certain failure conditions can the slam shut off valves release flammable substances into the environment. If the valves are installed in a poorly ventilated environment we recommend removing the protective cap and connecting a small pipe with a M10X1 connection. Position the other end of the pipe outside the room. In this case the escaping gas will be expelled outside. Before installation, check that the network pressure is not higher than maximum pressure that the slam shut off valve can withstand. The slam shut off valves must be installed upstream from the pressure regulator (Fig.1). The arrow printed on the body of the slam shut off valve must always be positioned facing the user. Connect the impulse line inlet (Fig.1) of the slam shut off valve with a copper tube using a G 1/8” connection which must then be connected to the piping downstream of the pressure regulator as shown in figure 1. Make sure that no shavings or waste have been left inside the network pipeline. Carefully check the connections made and test the seal of the system.

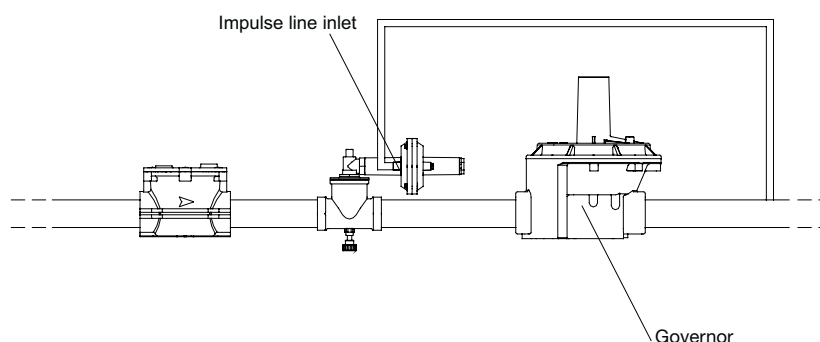
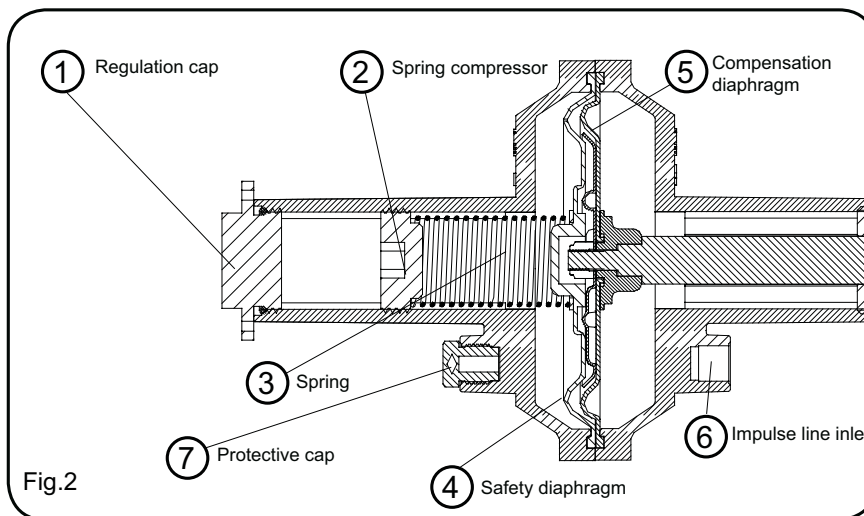


Fig.1

PRESSURE SETTINGS

Unscrew the regulation cap (1) to access the spring compressor (2) Fig.2. The outlet pressure is regulated by rotating the spring presser. Using a 10mm Allen key turn the spring presser clockwise to increase the pressure and anti-clockwise to reduce the pressure. After completing the regulation screw back the regulation cap.



MANUAL RESET

Make sure the flow downstream from the valve has been closed. For models (1", DN25, 1"1/4, DN32, 1"1/2, 2") (Fig.3a) push the rearm handle, for the flanged models (DN50, DN65, DN100) (Fig.3b) pull the rearm handle.

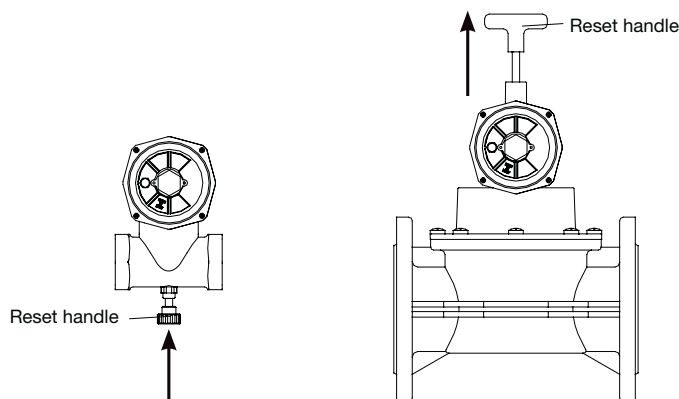


Fig.3a

Fig.3b